

## 2.6 COMMUNITY FACILITIES AND UTILITIES

## Buffalo Park

Community Park (10.65 acres)

Park Component	Condition		Capacity		Notes
	Poor/Fair/Good		Under/At/Over		
Vegetation		X		X	mowed turf, mostly larger mature trees (deciduous and evergreen) and some medium trees
Play Areas	X			X	small areas with trees (west side of park) and one large open area (far east edge of park) for simple games
Sports Fields		X	X		lighted baseball field, dugout facilities, batting cages, small bleachers and large retaining wall "bleachers," scoreboard
Sports Courts					none at this site
Walks/Trails	X			X	many paths within the park which include several connections to the surrounding neighborhood and elementary school
Play Equipment		X		X	new splash pad, swing set (4 swings), medium sized play structure with 2 slides, climbing and swinging bars, merry-go-round, small wooden balance beam
Structures		X		X	2 small picnic structures: one brick structure west side (6th St) and one on east side (not as high quality), concession stand/announcer's box with restrooms, on northeast side of baseball field, maintenance shed by batting cages on west side of baseball field
Picnic Facilities	X			X	2 small picnic structures with 2 picnic tables in each, 2 grills by 6th St picnic structure, trash cans near picnic structures and dispersed throughout park
Drinking Water			X		no drinking fountain, hydrant spigot only near east side
Restrooms	X		X		restrooms are located in concession stand facility on northeast side of baseball field, 1 portable toilet near splash pad and batting cages
Parking	X		X		gravel parking lot off of 6th Street (directly west of splash pad)
Lighting		X		X	baseball field is lighted, and one light near picnic structure near 6th St
Benches		X		X	many benches dispersed throughout park, buffalo bench (others located around town), swinging bench near playground, and 6 benches and 3 tables around splash pad
Signage	X		X		1 "Buffalo Park" sign at parking lot entrance off 6th St
Miscellaneous					small stone memorial with flag, the park is located directly south of elementary school



Buffalo Park



- 1 Parking
- 2 Splash Pad
- 3 Picnic Shelter
- 4 Play Structures
- 5 Pathways
- 6 Batting Cages
- 7 Memorial
- 8 Baseball Field
- 9 Concessions, Announcers Box and Restrooms
- 10 Retaining Wall "Bleachers"
- 11 Bleachers
- 12 Picnic Shelter
- 13 Large Open Green Space





2.6 COMMUNITY FACILITIES AND UTILITIES

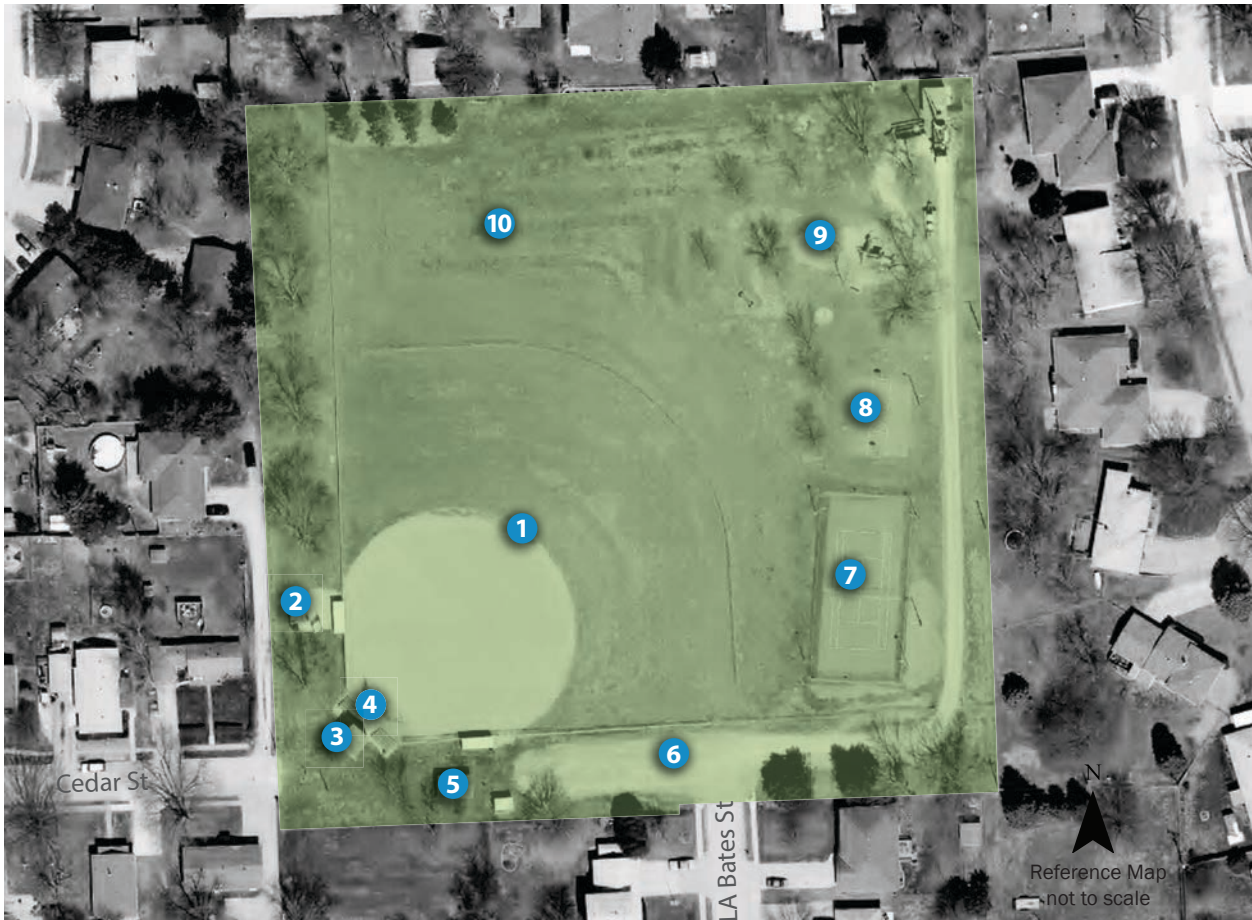
Springfield City Park

Neighborhood Park (5.27 acres)

Park Component	Condition		Capacity		Notes
	Poor/Fair/Good		Under/At/Over		
Vegetation		X	X		mowed turf, majority of trees are located in the northeast corner (playground area) and a mature deciduous tree row along west edge of park
Play Areas		X		X	large open space north of softball field for simple games
Sports Fields	X		X		1 softball field (not lighted), covered dugouts, 2 small metal bleachers, scoreboard, concession stand/announcers box
Sports Courts	X			X	1 tennis court (lighted), 1 undersized basketball court (somewhat lighted)
Walks/Trails				X	no pathways but a paved area behind dugouts and around concessions structure with a walkway to the restrooms
Play Equipment		X		X	located in the northeast corner of park, medium-sized play structure with slides, 1 swing set with 6 swings, and several other types of equipment for climbing and riding
Structures		X		X	1 picnic shelter, 1 concessions/announcers box, 1 separate restroom building, 1 equipment shed in far northeast corner of park near playground
Picnic Facilities	X			X	1 small picnic structure with 2 picnic tables, 2 grills and trash cans, located west of parking lot
Drinking Water				X	none at this site, outdoor faucet on concessions structure
Restrooms	X			X	1 small restroom structure with men and women restrooms
Parking	X			X	small gravel parking lot off of LA Bates St (south edge of park)
Lighting	X			X	lighting on tennis court and some lighting on basketball court but none on the softball field
Benches		X		X	benches in the playground area under trees and picnic tables
Signage	X			X	1 "Springfield City Park" sign at parking lot entrance off of LA Bates St., "City Park" also displayed on scoreboard
Miscellaneous					within a neighborhood (completely surrounded by houses) and has vehicular access off of only one residential street



City Park



- 1 Softball/Baseball Field
- 2 Bathrooms
- 3 Concessions and Announcers Box
- 4 Bleachers
- 5 Picnic Shelter
- 6 Parking
- 7 Tennis Court
- 8 Undersized Basketball Court
- 9 Play Structures
- 10 Large Open Green Space





2.6 COMMUNITY FACILITIES AND UTILITIES

Springfield Creek Trail & Recreation Area

Mini Park (3.8 acres)

Park Component	Condition		Capacity		Notes
	Poor/Fair/Good		Under/At/Over		
Vegetation		X	X		mowed turf, young trees, tree species are identified, dense natural vegetation borders the park (along creek)
Play Areas		X		X	somewhat open space for simple games but trees are dispersed throughout park
Sports Fields					none at this site
Sports Courts					none at this site
Walks/Trails		X		X	currently the trail head for the Springfield Creek Trail & Recreation Area, ADA accessible, will become the location of the connection to the MoPac Trail (trail extension to be completed in Fall 2014)
Play Equipment					none at this site
Structures					none at this site
Picnic Facilities		X	X		1 trash can, plenty of shade and mowed grass, but no picnic tables or shelter
Drinking Water				X	none at this site
Restrooms				X	none at this site
Parking		X		X	1 small bike rack, paved parking lot off of Platteview Rd, 26 stalls + 2 handicap stalls, ADA accessible
Lighting					none at this site
Benches				X	none at this site
Signage		X		X	informational sign with map, how to donate, and information about Springfield trail connects under Platteview Rd bridge to the Springfield Soccer Complex
Miscellaneous					



Springfield Creek Trail / Recreation Area



- 1 Identified Trees (Arboretum)
- 2 Parking
- 3 Springfield Creek Trail (MoPac Connection)
- 4 Small Bike Rack
- 5 Large Green Space





2.6 COMMUNITY FACILITIES AND UTILITIES

Urban Park

Mini Park (.13 acres)

Park Component	Condition		Capacity		Notes
	Poor/Fair/Good		Under/At/Over		
Vegetation		X	X		mowed turf
Play Areas		X		X	small open space adequate for simple games
Sports Fields					none at this site
Sports Courts					none at this site
Walks/Trails		X		X	sidewalks along 2nd St and Main St at street level and elevated park level, only ADA accessible from back alley entrance
Play Equipment					none at this site
Structures					none at this site
Picnic Facilities				X	none at this site
Drinking Water				X	none at this site
Restrooms					none at this site
Parking		X		X	street parking along 2nd St and Main St
Lighting				X	none at this site
Benches				X	concrete retaining wall around streetside outside edge serves as seating, but no traditional benches in park
Signage				X	none at this site
Miscellaneous					elevated above street level and accessed by corner steps and steps along 2nd St, railing surrounding park, infrastructure improvements to the park were completed August 30, 2013



Urban Park



- 1 Open Green Space
- 2 Stair Entrances
- 3 Cement Retaining Wall/Seating
- 4 Parking
- 5 Handicap Parking Space



## 2.6 COMMUNITY FACILITIES AND UTILITIES

## Springfield Soccer Complex *Sports Complex (14.6 used acres and 35.6 acres total)*

Park Component	Condition		Capacity		Notes
	Poor/Fair/Good		Under/At/Over		
Vegetation		X	X		mowed turf for soccer fields, natural vegetation surrounding complex (trees and shrubs), other trees planted around/between fields, along trail, and in parking lot
Play Areas					none at this site
Sports Fields		X	X		soccer fields, bleachers and benches, goals, unlighted fields, structure with concession stand and equipment storage
Sports Courts					none at this site
Walks/Trails		X	X		Springfield Creek Trail (will be connected to the MoPac by Fall 2014) borders the eastern edge of the soccer complex
Play Equipment					none at this site
Structures		X	X		1 structure for maintenance, equipment, and concessions, and another small shed
Picnic Facilities		X	X		4 picnic tables
Drinking Water			X		none at this site
Restrooms	X		X		2 portable toilets
Parking		X	X		large 3-tiered gravel parking lot with trees in the "islands," located off of Hwy 50
Lighting			X		none at this site
Benches		X	X		benches along some sidelines of fields for teams and small bleachers for spectators along most fields, 4 picnic tables near concessions/storage building
Signage		X	X		2 signs, one sign at the entrance of the complex off of Hwy 50, and another sign along Platteview Rd which read "Southern Sarp Activities Program (SSAP) Springfield Soccer Complex"
Miscellaneous					located at the corner of Platteview Rd and Hwy 50, connected to the Springfield Creek Trail/MoPac Trail, SSAP owns more land to the north so complex is able to expand with further resources



Soccer Complex



- 1 Soccer Fields
  - 2 Concessions and Equipment Storage
  - 3 Parking
- 4 Portable Restrooms
  - 5 Picnic Tables
  - 6 Springfield Creek Trail (MoPac Connection)



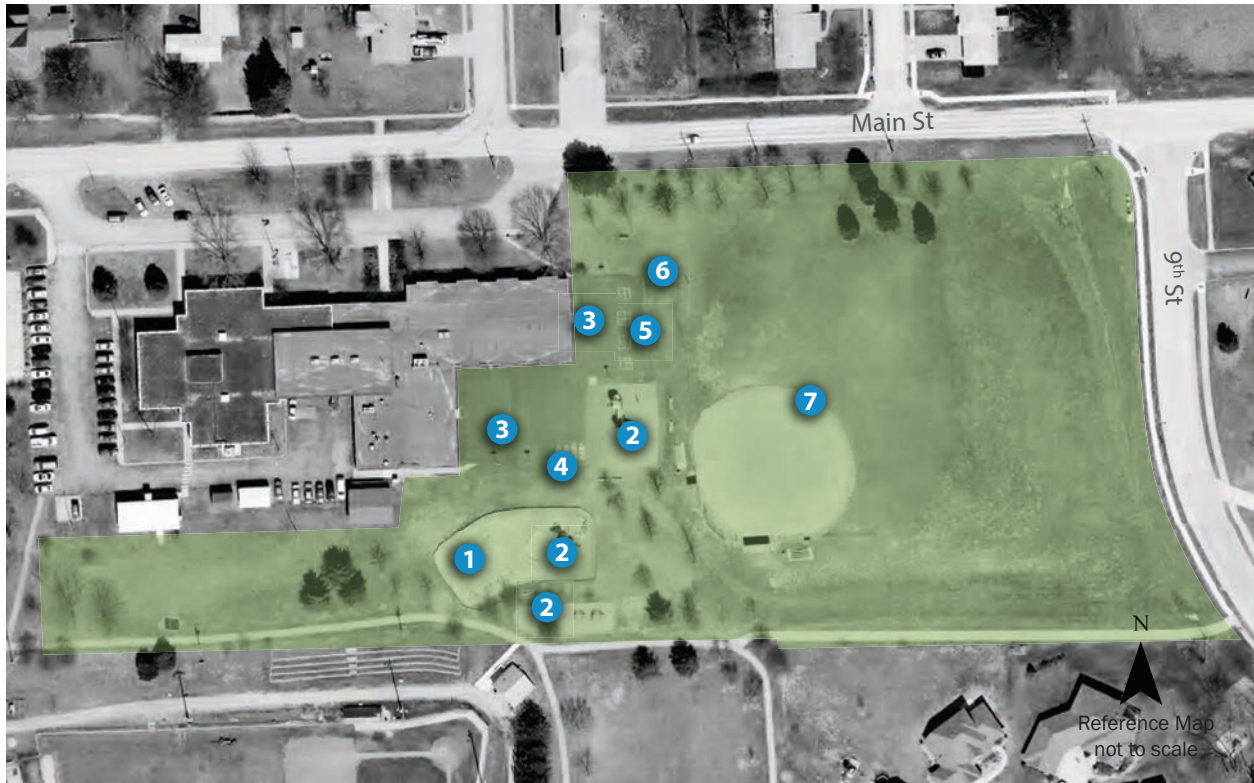
2.6 COMMUNITY FACILITIES AND UTILITIES

**Springfield Elementary School Playground** *Neighborhood Park (5.23 acres)*

Park Component	Condition		Capacity		Notes
	Poor/Fair/Good		Under/At/Over		
Vegetation	X		X		mowed turf, trees along Main St and surrounding play structures
Play Areas	X		X		4 four square games on pavement, 4 hopscotch games on pavement, small grass areas or large softball outfield for simple games
Sports Fields	X		X		1 softball field with covered dugouts, 2 small bleachers, no field boundary fence
Sports Courts	X		X		4 basketball hoops but no painted lines, volleyball net in grass
Walks/Trails	X		X		pathways along southern edge which connect to Buffalo Park, sidewalk along 9th St edge which leads to residential neighborhoods
Play Equipment		X		X	2 large play structures with slides and other features, 4 other small climbing structures, 2 large swing sets with a total of 16 swings
Structures		X		X	none at this site except for the school and related structures
Picnic Facilities					none at this site
Drinking Water					none at this site
Restrooms					none at this site
Parking		X		X	paved parking lot on west side of school building
Lighting		X		X	lights attached to exterior of building for security purposes
Benches		X		X	5 benches located throughout playground
Signage		X		X	2 signs for Springfield Elementary School on building facing Main St
Miscellaneous					directly northeast of Buffalo Park



## Elementary Playground



- 1 Swing Sets
- 2 Play Structures
- 3 Basketball Hoops
- 4 Hopscotch Game

- 5 Four Square Game
- 6 Volleyball Net
- 7 Softball/Baseball Field

