

2.6 COMMUNITY FACILITIES AND UTILITIES

Figure 18 Community Facilities Map



Public Properties



Public Facilities

City Hall

170 N. 3rd Street

The City Clerk's office, Council Chambers, and public works department is located inside the same building but accessed from 3rd Street and Cedar Street. There are six full-time employees, two part-time employees with a minimum of 30 hours, four part-time employees with less than 30 hours, and usually hires between two and four seasonal employees during the summer. Springfield has contracts for engineering services, planning services, budget and audit services, and the city attorney on a monthly retainer.

If the public works department moves out of the current City Hall building, the city is exploring its options for a new City Hall. This potential decision has led to a budgeted item for architectural renderings for the city's property at North 1st and Main Street near the Community Building. The purpose of this study is to determine the city's available options. This research can determine best uses and configurations for more commercial or non-profit development opportunities for the city's one and a half acre property.

Public Works Department

365 Cedar Street

The Public Works Department is currently housed in the former Fire Hall. The Public Works Department may relocate at the Springfield Industrial Park. The city currently owns the property on the northeast corner of 1st and Pflug. Plans for the current public works department space would be an expansion for additional city storage or potential for the City Hall to relocate on Main Street and sell the building.

Springfield Memorial Library

665 Main Street

The library has one director and two assistants. The building underwent an expansion which was all funded by donations. Residents and members have access to a large collection of materials as well as providing wireless internet. The library's electronic resources are available for logged-in users. The library has a range of youth and adult services available.

Community Building

104 Main Street

The community still utilizes the 1938 Works Progress Administration (WPA) project on Main Street. The facility is regularly used for public and private events. For example, the space is used for youth basketball with the original floor. The building needs some repairs but is in good condition. The city plans to continue general upkeep of the building; however, the city does not plan to make large investments in the building.

2.6 COMMUNITY FACILITIES AND UTILITIES

Infrastructure

The City of Springfield continues to provide satisfactory services while preparing for expansion when the time is needed. The services provided include water distribution as well as wastewater collection and treatment. The City is preparing itself for future growth.

The water tower is located east of town along Platteview Road. The tower was installed in 1993 and has needed minimal repairs for twenty years. However, the tower has recently developed some cracks. The repairs are considered a priority and evaluating the scale of them may constitute a larger investment for the repairs.

There are two municipal wells in service. There have been studies and test wells drilled to determine the feasibility of an additional well to the water system. At this time, there is no decision yet if there will be a third well. The current system adequately serves the city, but new development would warrant the need of adding another well.

Springfield's Wastewater Treatment Plant is in good condition. The emphasis on the treatment plant was preparing for expansion as the city grows. The plant's one tank can handle additional development. If substantial growth were to occur, this demand can be handled with expansion by adding up to an additional three tanks if needed. There will be new mandates on wastewater permits in 2018. Plans exist to conduct a sewer study to determine future growth capacity.

The storm drainage system drains into the Springfield Creek. No significant storm drainage issues exist at this time. As Springfield looks to grow, the resulting storm drainage will continue to be addressed.

City Parks

Buffalo Park, City Park, Urban Park, Springfield Creek Trail and Recreation Area

More detail is available in the Parks inventory of the Profile and recommendations found in the Parks and Trail Plan of the Achieve Section.



Public Properties

Quasi-Public Facilities

These properties are available to the general public but not maintained by the city.

Quasi-Public Parks

MoPac Trail, Springfield Soccer Complex, Springfield Elementary School Park

Sarpy County Fairgrounds

South Railroad Street and Main Street

This property serves Springfield as a welcome sign along Main Street for Highway 50 traffic. The 2014 Sarpy County Fair marked the 75th anniversary of being held in Springfield. The property is available to rent for non-profit events and private parties. It is owned and operated by the Sarpy County Agricultural Society. The Board of Directors oversees the operations of the County Fairgrounds and County Fair.

Springfield Cemetery

14500 South Highway 50

This property is located on the north side of Springfield but is not owned or operated by the city. The cemetery is supported through donations and is managed through the Springfield Cemetery Association. This volunteer organization allocates the donations for and upkeep of the 14 acre property.



2.6 COMMUNITY FACILITIES AND UTILITIES

PRIMARY / SECONDARY

Springfield Platteview Community Schools serve Springfield and much of southern Sarpy County. Formed in 1958 through the consolidation of numerous rural systems, the district, today, serves over 1,000 students in 4 schools including an Elementary school inside the Springfield city limits.



Despite significant funding losses to the metro Learning Community in recent years the district continues offering an education competitive with that of other area school systems. While maintaining among the lowest tax rates in the area, Springfield Platteview has prepared students to score well on state tests, and made significant investments in extra-curricular activities. A 2004 bond issue, for example, allowed the district to build facilities for vocational education, the performing arts, and athletics. During the 2012-2013 school year, the district began offering each student a digital tablet through its 1 to 1 iPad Learning Initiative. The program's focus on college preparation and twenty-first century skills development, noted by Superintendent Brett Richards on the district website, aims to graduate students better-equipped to succeed in future job markets.

Bond Issues

In successive elections in November 2013 and May 2014 district citizens voted against 35 and 25 million dollar bond issues, respectively. Both would have addressed safety, security, renovation, and expansion needs. Following the second rejection from voters the district made the decision to suspend further bond efforts until 2016. In the interim the superintendent indicated plans to seek additional funding from the Learning Community, to which much has been lost in recent years. The district also hopes to use the intervening period to foster the sort of community support that might lead to sustainable bond issue success.

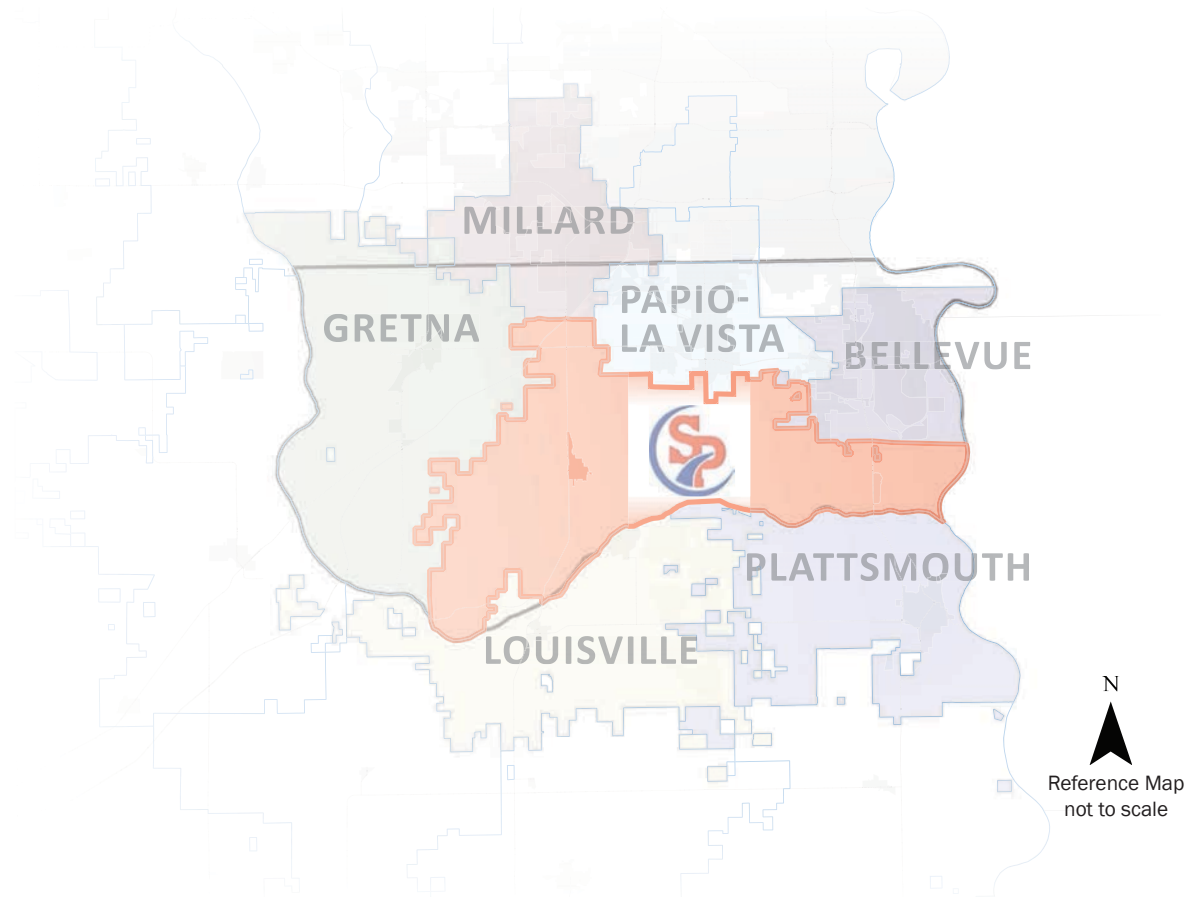
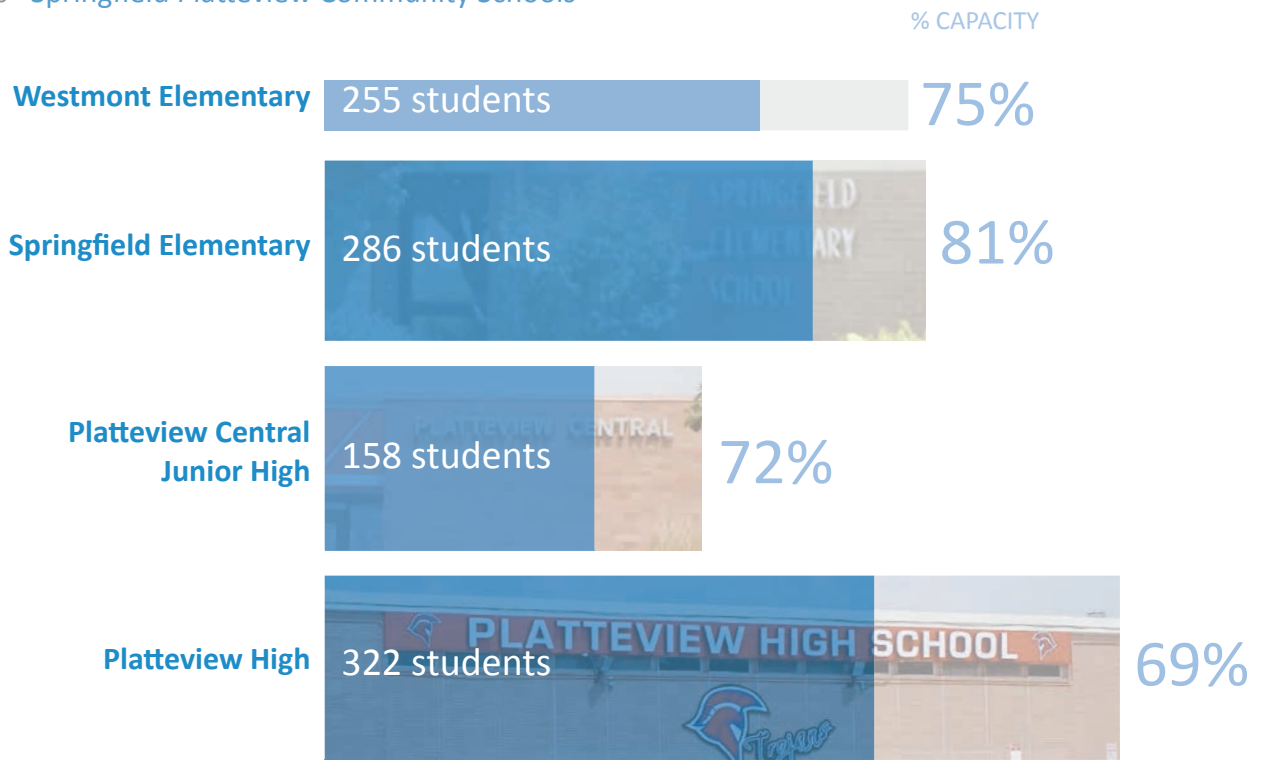
Though the district has maintained relatively stable numbers in recent years, enrollment rose by more than 5% between the 2012-2013 and 2013-2014 school years. District improvements, if approved by voters in future elections, will help ensure the continued health of the Springfield Platteview Community Schools and City of Springfield.

Post-Secondary Education

Post-Secondary Schools within 15 miles		
Nebraska Christian College	8.1 miles	4-year, Private
ITT Technical Institute - Omaha	10.6 miles	4-year, primarily associates, Private
Bellevue University	13.7 miles	4-year, Private
College of Saint Mary	14.1 miles	4-year, Private
University of Nebraska - Omaha	14.9 miles	4-year, Public

Educational Facilities

Figure 19 Springfield Platteview Community Schools



2.6 COMMUNITY FACILITIES AND UTILITIES

Fire and Police Protection

Springfield Volunteer Fire Department Fire Station

505 South 1st Street

The volunteer fire department is celebrating its 100th anniversary. The current fire hall was recently built in 2012. It was relocated from the City Hall location to the south side of Springfield. This new location in the industrial area offers more space and is good for quick rural response times. The Department needed more space and allows for more onsite activities such as outdoor training.



The Springfield Volunteer Fire Department Rural District is approximately 49 square miles. The department responds to roughly 175 rescue calls and 115 fire calls annually. The inventory of 2014 fire hall include:

- Two Engines with 1250 gpm pump and 750 tank
- Two Tankers, or water tenders, 350 gpm and 2000 gallon tank
- One Brush truck with 350 pump and 275 gallon tank
- Two Rescue squads

Sarpy County Sheriff's Office

1210 Golden Gate Drive
Papillion, NE

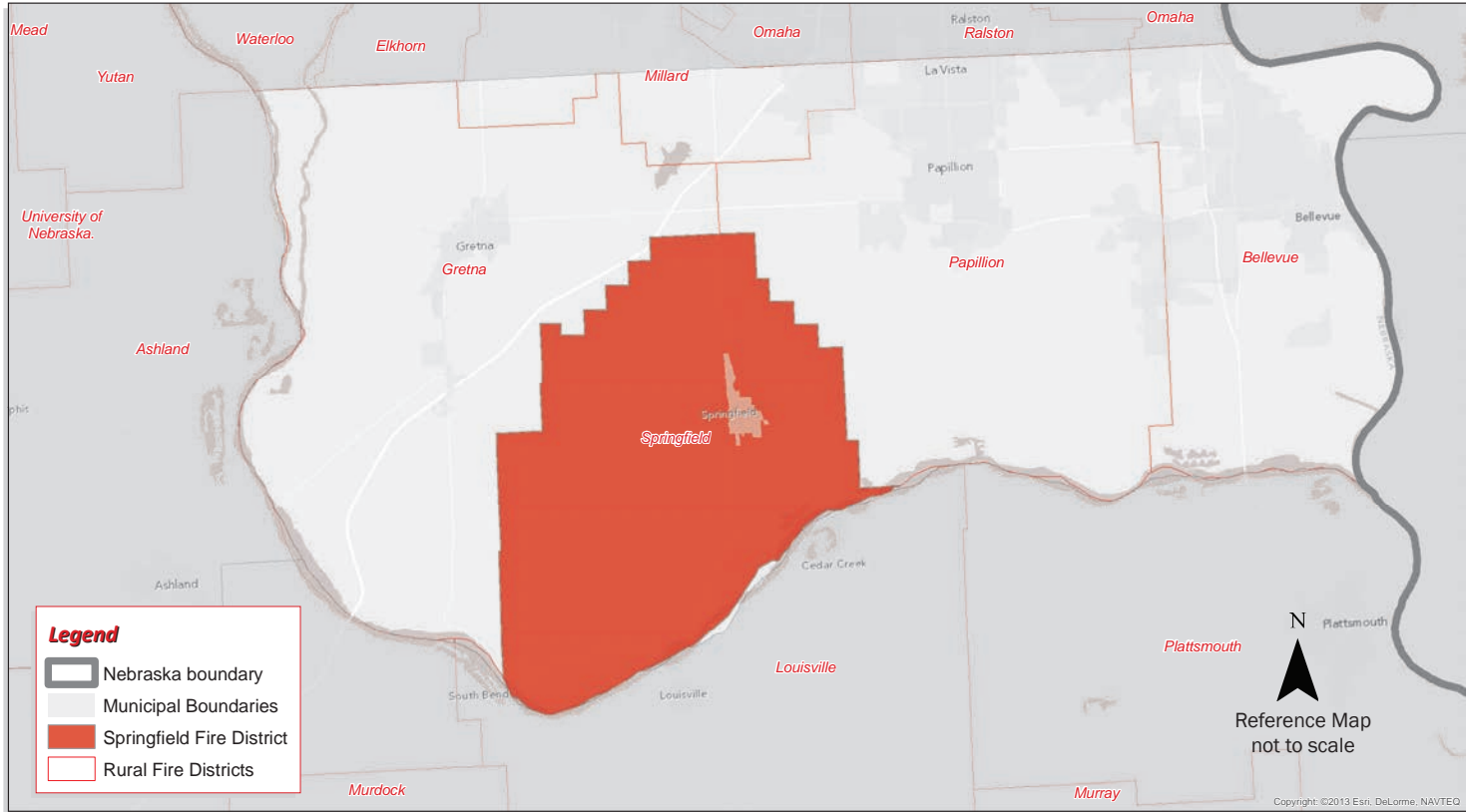
The City of Springfield contracts with the Sarpy County Sheriff's Office for police services. This contract is renewed every three years and allows the city flexibility to change according to its needs of the Sheriff's Office.

WHEREAS, pursuant to the Interlocal Cooperation Act, Neb. Rev. Stat. §13-801, et seq (Reissue 2012), the Parties wish to permit local government units to make the most efficient use of their powers by enabling them to cooperate with other localities on a basis of mutual advantage and thereby provide services and facilities in a manner and pursuant to forms of governmental organization that will accord best with geographic, economic, population, and other factors influencing the needs and development of local communities;

Currently, a new police department is not part of the Springfield's vision because the Sarpy County Sheriff's Office provides more than adequate services for reasonable compensation.



Figure 20 Springfield Rural Fire District



2.6 COMMUNITY FACILITIES AND UTILITIES

Health/Communications

As mentioned previously, Springfield's location benefits from the Omaha metropolitan area with good access to public health facilities. With many options available within short distances, the elderly population that out-migrated in the previous decade may have done so because Springfield's lack of assisted living facilities. As Springfield and the nation continue to have higher median ages, it behooves the City of Springfield to encourage elderly housing options to keep residents within the city. The following is a list of nearby facilities to handle the needs of Springfield's aging population.

Assisted Living

Facilities within ten miles:

- LOUISVILLE CARE CENTER (7.6 miles)
- HUNTINGTON PARK CARE CENTER (8.0 miles)
- PAPILLION MANOR (8.2 miles)
- GRETNA CARE CENTER (8.7 miles)
- HILLCREST COUNTRY ESTATES (9.8 miles)

Hospitals

The three nearest hospitals are:

- ALEGENT CREIGHTON HEALTH MIDLANDS HOSPITAL (7.7 miles)
- BELLEVUE MEDICAL CENTER (13.0 miles)
- ALEGENT CREIGHTON HEALTH LAKESIDE HOSPITAL (13.8 miles)

Telecommunications

Springfield is currently served by Charter Communications and has limited service by CenturyLink. There is a competitive communications market in the Omaha-Council Bluffs Metropolitan Area that will continue to expand into the Springfield area during the planning period.



Communications/Transportation

Springfield Community Communications

Radio

Strongest AM Stations		
KFAB 1110 AM	KOIL 1290 AM	KMMQ 1020 AM
KOZN 1620 AM	KYOT 1180 AM	KOMJ 590 AM
KLNG 1560 AM	KCRO 660 AM	KOTK 1420 AM
KOMJ 1490 AM	KHLP 1420 AM	KMA 960 AM
Strongest FM Stations		
KMLV 88.1 FM	KLCV 88.5 FM	KIWR 89.7 FM
KVNO 90.7 FM	KIOS 91.5 FM	KEZO 92.3 FM
KFFF 93.3 FM	KQCH 94.1 FM	KEFM 96.1 FM
KBBX 97.7 FM	KQKQ 98.5 FM	KGOR 99.9 FM
KGBI 100.7 FM	KLTQ 101.9 FM	KFRX 102.7 FM
KXKT 103.7 FM	KSRZ 104.5 FM	KKCD 105.9 FM
KOPW 106.9 FM	<i>source: radio-locator</i>	

Television

Stations located within 20 miles of Springfield include:

Strongest Broadcast Stations		
SIGN	AFFILIATE	LOCATION
KXVO	CW	Omaha
KPTM	FOX	Omaha
KYNE-TV	PBS	Omaha
KMTV	CBS	Omaha
KETV	ABC	Omaha
WOWT-TV	NBC	Omaha
KUON-TV	PBS	Lincoln
KBIN-TV	PBS	Council Bluffs
<i>source:www.antennapoint.com</i>		

Newspapers

Listed below are the various newspapers serving the residents of Springfield.

- Springfield Wednesday Newsletter (weekly, online)
- Omaha World Herald (daily)
- Lincoln Journal Star (daily)
- CassGram (daily)

2.6 COMMUNITY FACILITIES AND UTILITIES

Utilities / Transportation

Utilities

The City of Springfield provides water and sewer services while Omaha Public Power District (OPPD) provides electricity. Black Hills Energy supplies natural gas to Springfield.

Transportation

Transportation facilities available to the general public include:

Truck Lines: The City of Springfield is served by interstate and intrastate carriers. As of 2014, there are three local carriers and multiple regional carriers nearby at Interstate 80 interchanges.

Bus Services: There is no bus service within Springfield. However, there is limited shuttle services provided by the Eastern Nebraska Office of Aging (ENOA) to Springfield and rural residents of Sarpy County.



Railroads: There is no railroad access within Springfield. The nearest commercial rail service is the Omaha terminal for Amtrak at 9th and Pacific Street in Downtown Omaha.



Airport: There is no airport service in the City of Springfield. The nearest public airport is the Millard Airport. The nearest commercial air service is Eppley Airfield in northwest Omaha.



Local Transportation Network: The vast majority of travel is on the automobile transportation network. Due to lack of alternative infrastructure, the smaller, localized transportation system and local collectors include the less traveled but important access points to the larger regional transportation system. Within the corporate limits, the maintenance of Main Street, North 2nd Street, and South 1st Street are important for traffic flow to Highway 50 and Platteview Road. The Nebraska State Functional Classifications only identifies Highway 50 as an minor arterial. The Federal Functional Classification and their importance for rural traffic near Springfield will be addressed in more detail in the Achieve Chapter.